

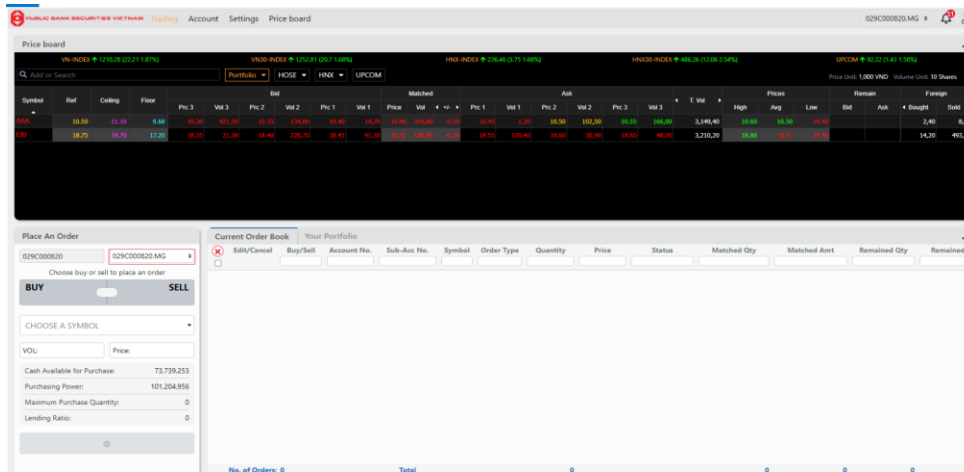


GUIDELINES FOR SELECTING SUB-ACCOUNTS AND PLACING BUY/SELL ORDERS

Step 1: Select Trading Sub-Account

After successfully logging in, clients select the trading sub-account on the following screen:

- Sub-account ending in **MG** is a margin account.
- Sub-account ending in **NM** is a regular/normal account.



Step 2: Once the sub-account is selected, clients can choose to **BUY** or **SELL**:

Place An Order

029C000820 029C000820.NM

BUY **SELL**

CHOOSE A SYMBOL

VOL: Price:

Cash Available for Purchase: 9,700,000.000
Purchasing Power: 9,699,986.608
Maximum Purchase Quantity: 0
Lending Ratio: 0

BUY @

or

Place An Order

029C000820 029C000820.NM

BUY **SELL**

CHOOSE A SYMBOL

VOL: Price:

Cash Available for Purchase: 9,700,000.000
Max Sell Quantity: 0

SELL @

Enter the stock code and the price you wish to buy/sell, then click “**Buy**” or “**Sell**”.

A confirmation screen will pop up for clients to fill in PIN number to place the order.